

# Dock Installation Guide and Checklist

## Required Materials and Tools



Sensor + Dock



**Step #3**  
Rubber Prep Pre-buff Buffing Solution  
(Or equivalent such as Rema Tip Top DT-491F)



**Step #4+#5**  
Tire Scraper Tool



**Step #5**  
Tire Buffing Tool



**Step #6**  
Vacuum Cleaner



**Step #7**  
Vulcanizing Fluid  
(Or equivalent such as Rema Tip Top DT-7362)



**Step #9**  
Roller Tool



**Step #12**  
Revvo Tire Decal (RTD)

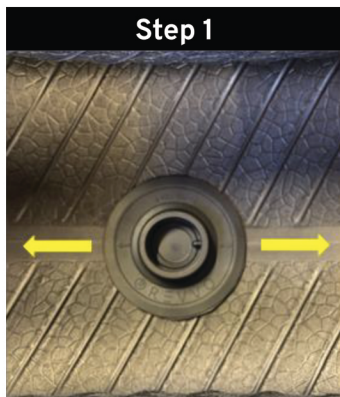


**Step #13**  
Lubricant\*  
(Or equivalent such as Rema Tip Top DT-75)  
\*This material is optional



**Step #15**  
Bead Sealer  
(Or equivalent such as Rema Tip Top DT-507F)

## Instructions

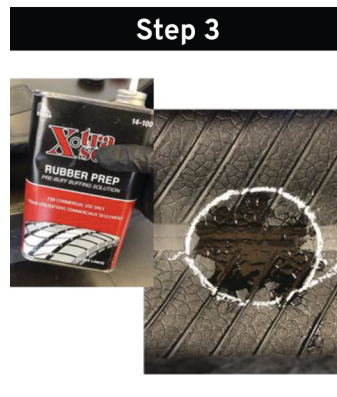


**Step 1**  
Outline Dock to ensure there are no defects. Align arrows and notch on dock with centerline on tire.

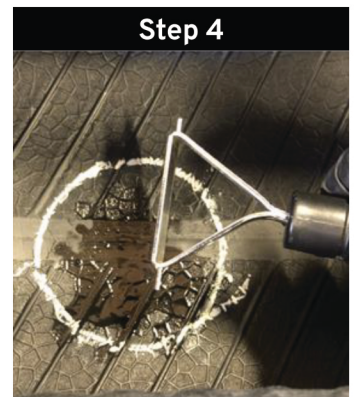
It is recommended that the dock should be installed 180 degrees from the tire valve.



**Step 2**  
Outline dock with tire chalk to define area that will be prepped for proper Dock installation. Cover at least the circular area will the Dock will be installed. Area does not have to be a circle but must enclose the Dock's installation area.



**Step 3**  
Pour enough rubber prep/pre-buff solution to cover designated installation area. Allow 30 seconds for solution to flash off. Cover at least the circular area where the dock will be installed.



**Step 4**  
Use tire scraper tool to make 10-15 passes using firm force. This is to remove any excess chemicals to ensure surface is prepped.

## Instructions - Continued

### Step 5



Use tire buffing tool to remove excess tire material to ensure designated area has been properly prepped. Use the tire scraper tool to remove any excess rubber.

Note: Instead of a scraper, a brush (see picture) can also be used.



### Step 6



Vacuum buffer debris until there are no debris particles visible.

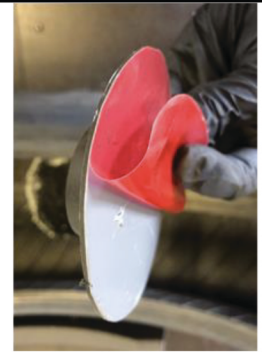
Note: Any vacuum that can deal with the debris' size can be used.

### Step 7



Apply 3-4 strokes of vulcanizing fluid. Wait until entire installation surface is 'tacky' to the touch\* and there are no wet spots. Depending on the ambient temperature, it usually takes 1-3 minutes for chemical to activate. **\*Important for proper adhesion\***

### Step 8



Carefully remove plastic protector from the bottom of the Dock without contacting the adhesive surface (white surface in the picture)

### Step 9



Apply Dock onto designated area with firm pressure, keeping arrows along the tire centerline. Use roller tool to apply even adhesion, starting from the center of the Dock and then moving to the outside in an outward fashion. Allow 1-2 minutes for Dock to bond.

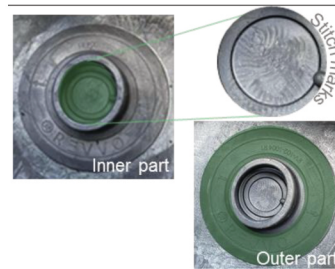
### Step 10



Make sure there are stitch marks left by the roller both inside the cradle and outside the cradle and that they are uniformly spread.



### Step 11



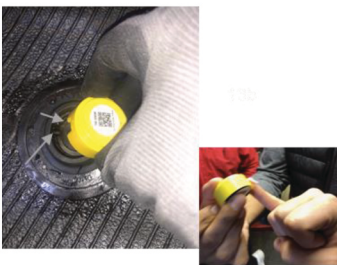
Take the picture of the inner part and the outer part of the patch, make sure there are stitch marks, and that the marks are spread uniformly. Only one picture is needed if using a high-enough resolution camera to capture the stitch marks.

### Step 12



12a. Apply the RTD (orange label) firmly to the tire.  
12b. Take the QR code label from the sensor.  
12c. Apply the QR code label from 13b to the RTD label.  
12d. Confirm the label is fully installed.  
12e. Take a picture of the label installed.

### Step 13



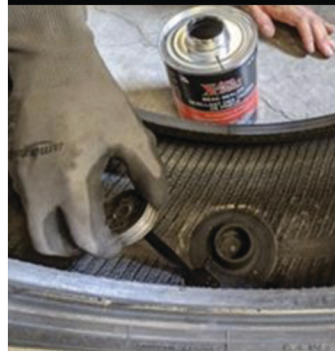
Align the empty notch space on the bottom of the Sensor with the notch on the Dock and press down firmly. If needed, apply a small amount of lubricant\* - just enough to cover the Sensor's ridge (see picture) for easier installation. **\*DO NOT** apply lubricant to the top of the sensor.

### Step 14



Work the edges of the Dock with your fingers to ensure the rubber tip completely covers the edge of the Sensor. **\* Make sure there is no visible damage in the Sensor once it is on the Dock. \* Test adhesion by pushing and tugging horizontally on the Dock - it should not move**

### Step 15



Apply bead sealer to the outer edge / perimeter of the patch.  
Wait for 15 seconds for the sealer to dry.

### Step 16



The Sensor is now fully seated into the Dock. The lip of the cradle should completely cover the lower edge of the Sensor (as shown).